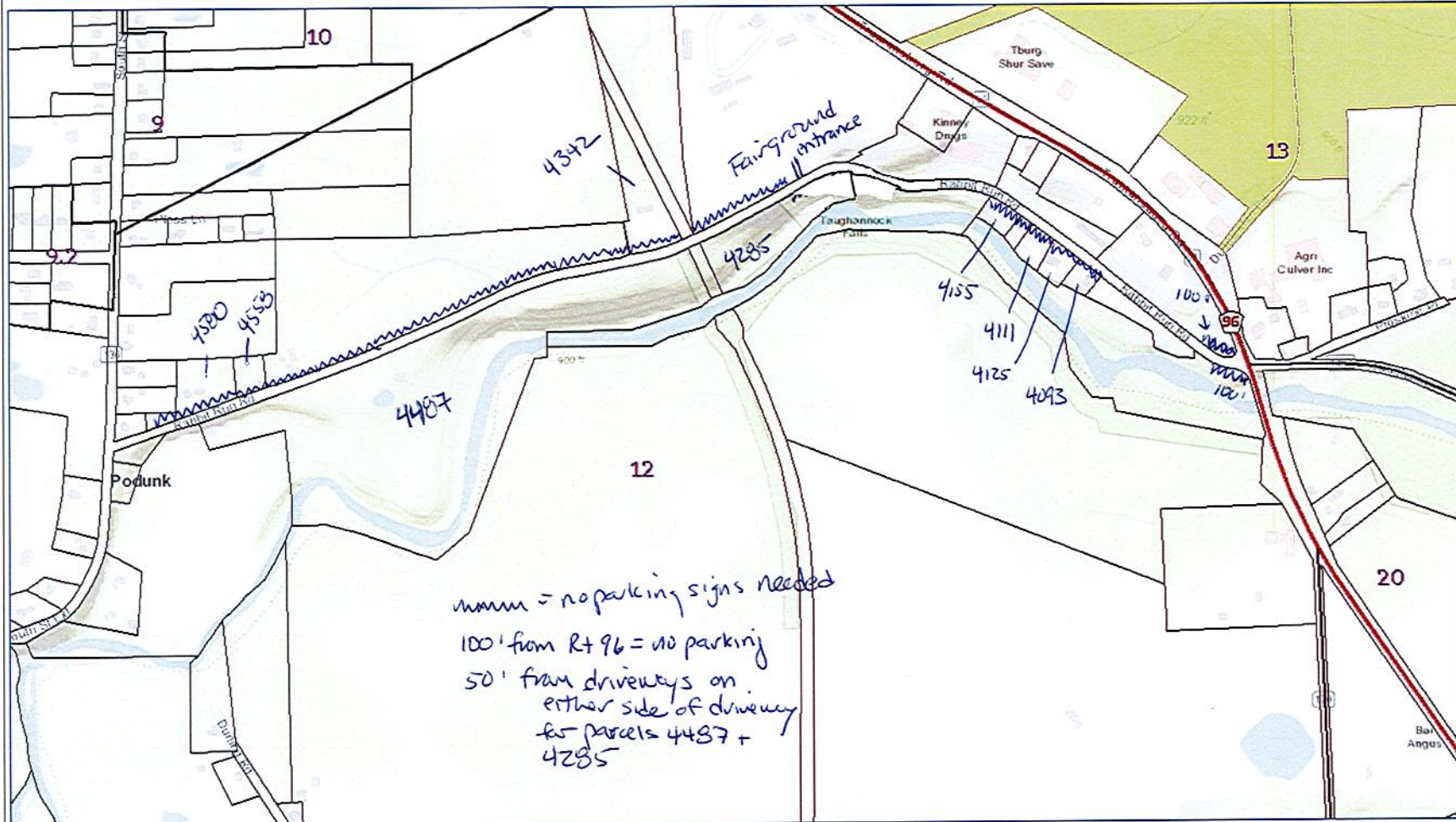




# Tompkins County Property Viewer



## Legend

Citations

~~~~~ = no parking signs needed  
100' from Rt 96 = no parking  
50' from driveways on either side of driveway for parcels 4487 + 4285

1:8,431



1,405.2 0 702.61 1,405.2 Feet

WGS 1984 Web\_Mercator\_Auxiliary\_Sphere  
© Tompkins County GIS

Map is user generated and is to be used as a reference only. Data layers are not guaranteed to be accurate or up-to-date.

DO NOT USE FOR CONVEYANCE OR NAVIGATION

## Notes

This map was automatically generated using Geocortex Essentials. Your tax dollars at work!